



RAYTOWN INDUSTRIAL BUILDING

5631-5633 Raytown Road, Raytown, Missouri



LEASE RATE: \$7,000/MONTH NNN | 12,000 SF BUILDING

DEMOGRAPHICS

| | 1 mile | 3 miles | 5 miles |
|-----------------------|----------|----------|----------|
| Estimated Population | 8,285 | 54,810 | 147,798 |
| Avg. Household Income | \$85,606 | \$83,266 | \$79,624 |

- Zoned Neighborhood Commercial
- Offices and warehouse
- Dock high
- Drive in
- 3 Phase power



CLICK HERE TO VIEW MORE
LISTING INFORMATION

For More Information Contact:

BILL MAAS, CCIM | 816.412.7392 | bmaas@blockandco.com

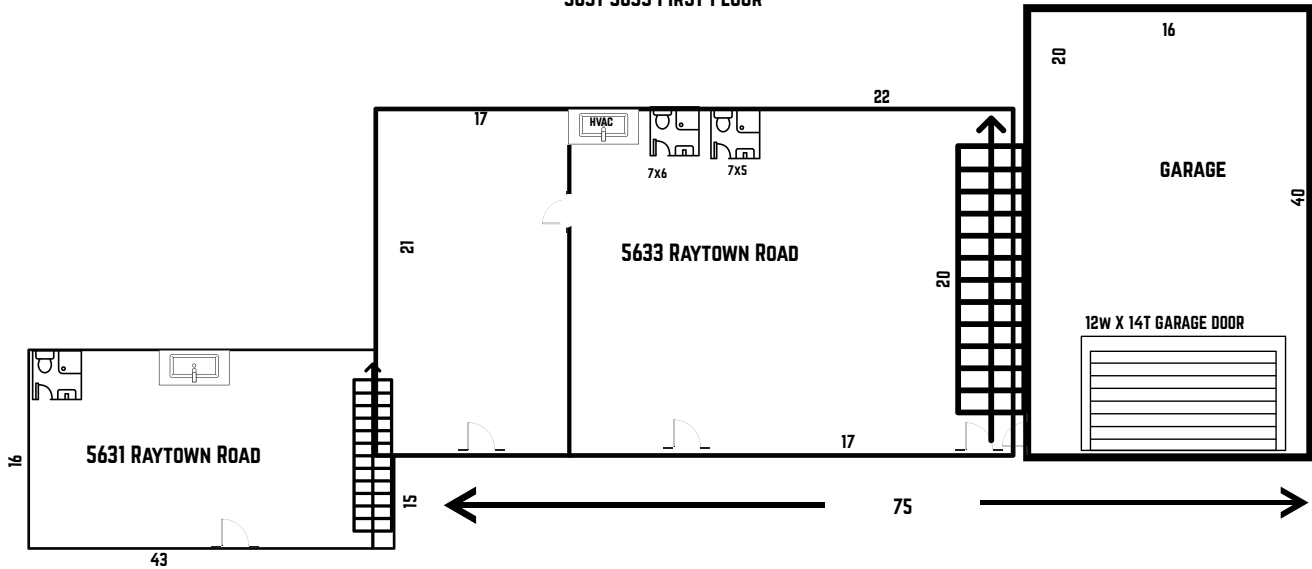
Exclusive Agent

PHOTOS

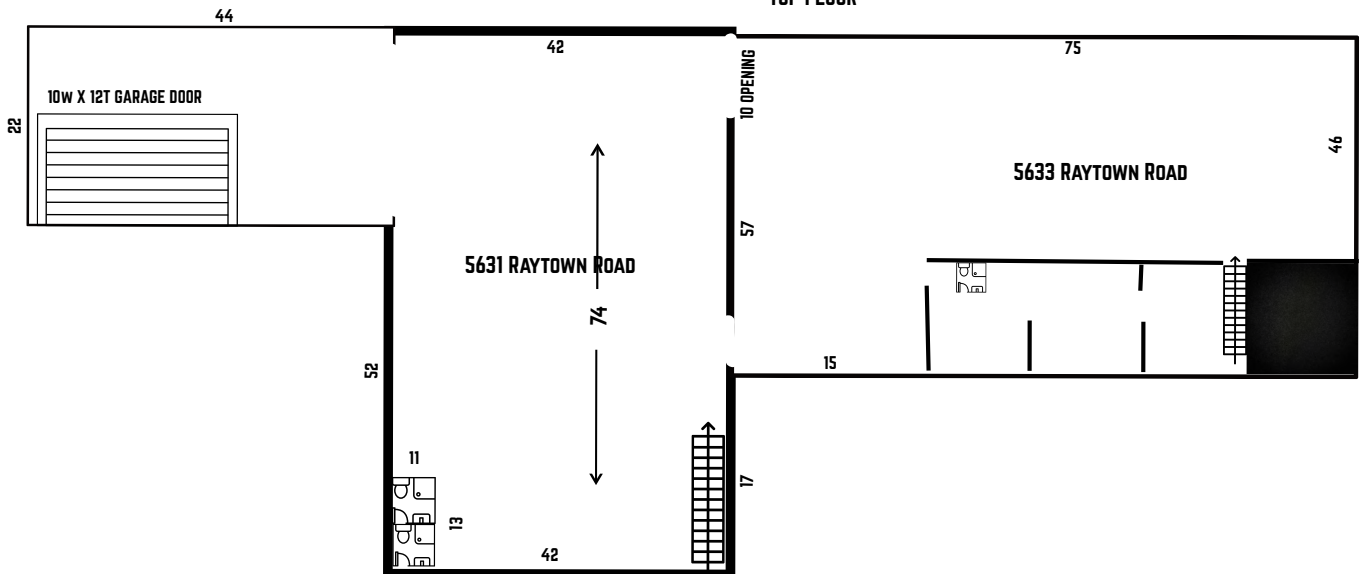


FLOOR PLANS

5631-5633 FIRST FLOOR



5631-33 RAYTOWN ROAD
TOP FLOOR

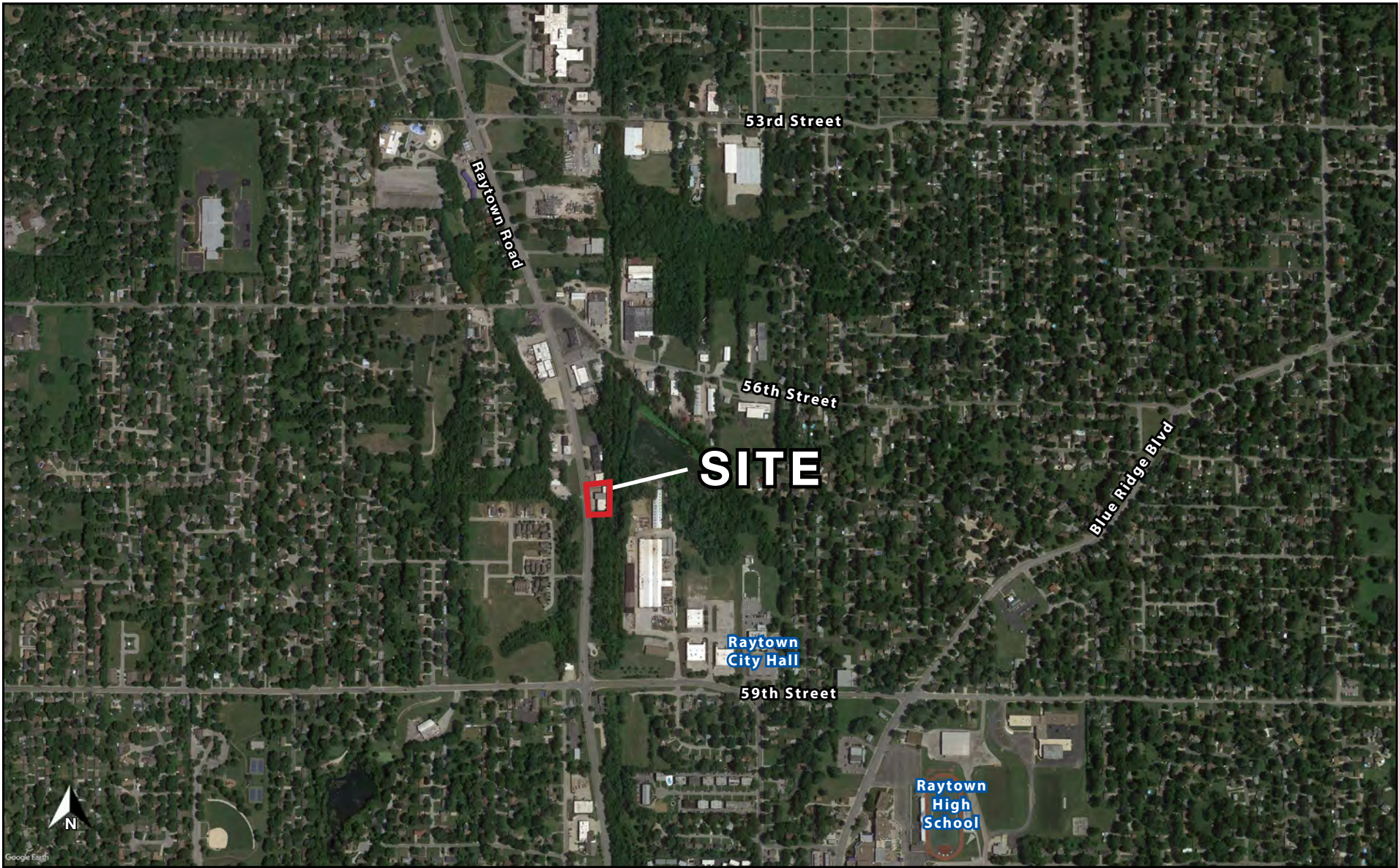




RAYTOWN INDUSTRIAL BUILDING

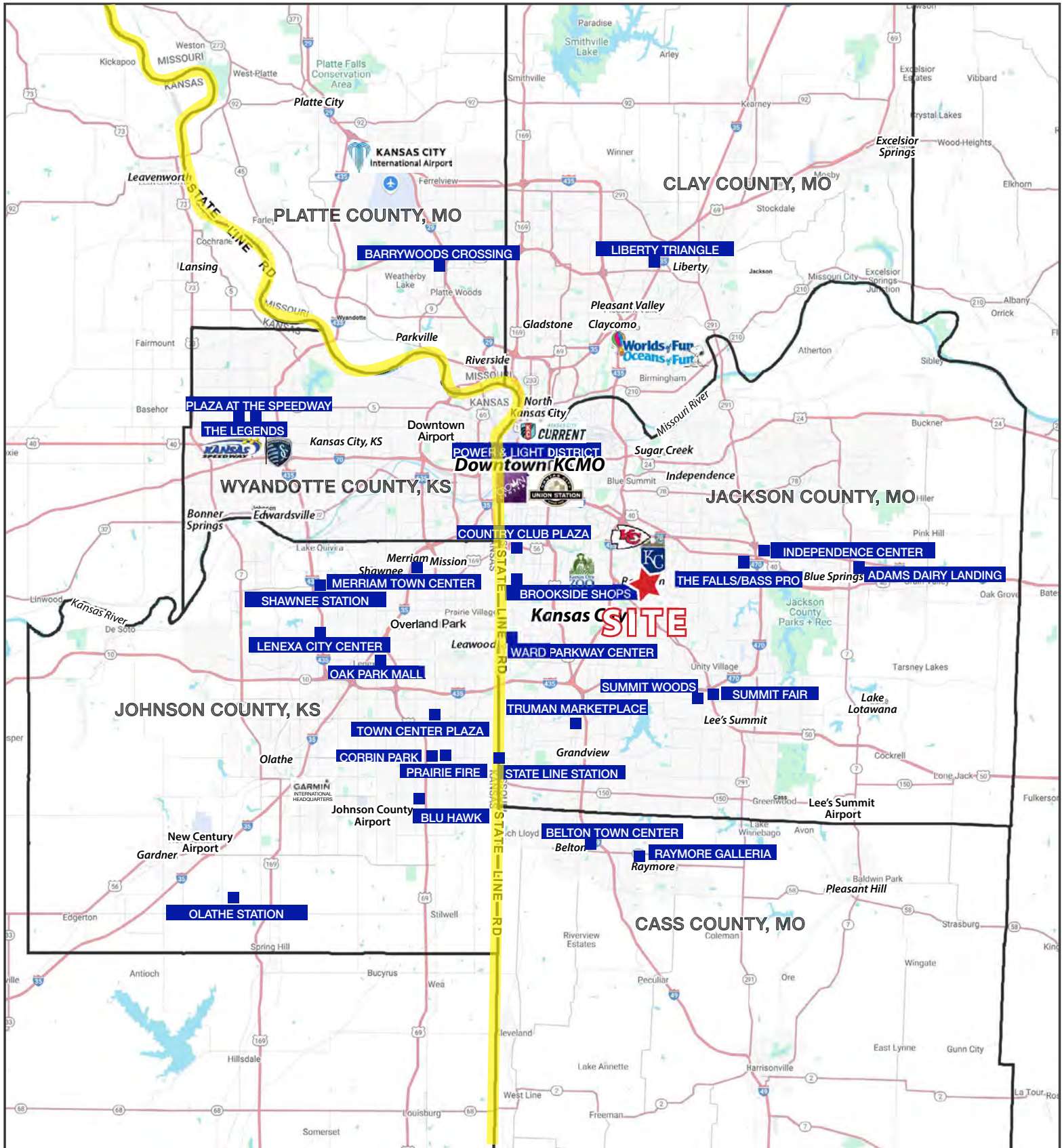
5631-5633 Raytown Road, Raytown, Missouri

AERIAL



RAYTOWN INDUSTRIAL BUILDING

5631-5633 Raytown Road, Raytown, Missouri





RAYTOWN INDUSTRIAL BUILDING

5631-5633 Raytown Road, Raytown, Missouri

| 5631-5633 Raytown Road Raytown, MO 64133 | 1 mi radius | 3 mi radius | 5 mi radius |
|---|----------------|----------------|----------------|
| Population | | | |
| 2025 Estimated Population | 8,285 | 54,810 | 147,798 |
| 2030 Projected Population | 8,206 | 54,563 | 146,625 |
| 2020 Census Population | 8,646 | 55,356 | 147,668 |
| 2010 Census Population | 8,328 | 54,283 | 144,598 |
| Projected Annual Growth 2025 to 2030 | -0.2% | - | -0.2% |
| Historical Annual Growth 2010 to 2025 | - | - | 0.1% |
| 2025 Median Age | 40.0 | 39.3 | 38.9 |
| Households | | | |
| 2025 Estimated Households | 3,624 | 23,280 | 62,347 |
| 2030 Projected Households | 3,611 | 23,340 | 62,308 |
| 2020 Census Households | 3,612 | 23,572 | 62,225 |
| 2010 Census Households | 3,373 | 22,683 | 60,195 |
| Projected Annual Growth 2025 to 2030 | - | - | - |
| Historical Annual Growth 2010 to 2025 | 0.5% | 0.2% | 0.2% |
| Race and Ethnicity | | | |
| 2025 Estimated White | 55.8% | 55.2% | 50.4% |
| 2025 Estimated Black or African American | 32.7% | 32.7% | 36.8% |
| 2025 Estimated Asian or Pacific Islander | 1.0% | 1.4% | 1.4% |
| 2025 Estimated American Indian or Native Alaskan | 0.4% | 0.4% | 0.5% |
| 2025 Estimated Other Races | 10.1% | 10.3% | 11.0% |
| 2025 Estimated Hispanic | 9.8% | 10.1% | 10.8% |
| Income | | | |
| 2025 Estimated Average Household Income | \$85,606 | \$83,266 | \$79,624 |
| 2025 Estimated Median Household Income | \$68,723 | \$65,239 | \$61,619 |
| 2025 Estimated Per Capita Income | \$37,552 | \$35,447 | \$33,678 |
| Education (Age 25+) | | | |
| 2025 Estimated Elementary (Grade Level 0 to 8) | 1.4% | 2.2% | 2.6% |
| 2025 Estimated Some High School (Grade Level 9 to 11) | 7.4% | 5.0% | 6.3% |
| 2025 Estimated High School Graduate | 34.9% | 34.3% | 35.2% |
| 2025 Estimated Some College | 26.5% | 25.0% | 25.4% |
| 2025 Estimated Associates Degree Only | 6.9% | 10.1% | 8.9% |
| 2025 Estimated Bachelors Degree Only | 15.4% | 15.1% | 13.9% |
| 2025 Estimated Graduate Degree | 7.5% | 8.2% | 7.7% |
| Business | | | |
| 2025 Estimated Total Businesses | 358 | 1,770 | 4,307 |
| 2025 Estimated Total Employees | 3,363 | 16,345 | 39,589 |
| 2025 Estimated Employee Population per Business | 9.4 | 9.2 | 9.2 |
| 2025 Estimated Residential Population per Business | 23.1 | 31.0 | 34.3 |

©2025, Sites USA, Chandler, Arizona, 480-491-1112 Demographic Source: Applied Geographic Solutions 5/2025, TIGER Geography - RS1